

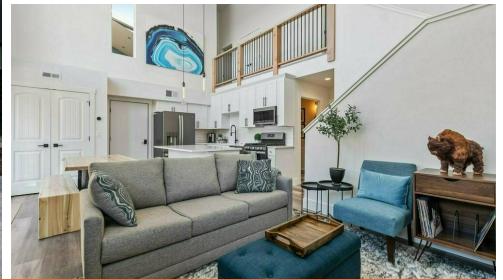


Jim "Skip" Wehan Statue in Dana Point Harbor

Givsum Foundation



Whitefish Escape for Up to 10



Starting Bid **\$5,150.00**

Retail Value \$6,250.00

2 Available

Whitefish is a highly sought-after mountain town located in northern Montana. The area's unspoiled nature and sprawling landscape boast some of the best access to the upper Rocky Mountains anywhere. Visitors experience the peaks and valleys of Glacier National Park, breathtaking views, ample mountain and water activities, as well as award-winning cuisine and nightlife. Experience includes 5 days/4 nights; 3 bedrooms with 2 kings and 1 bunk room for up to 10. Perfect for 2 families traveling together, with upscale amenities and stunning views; Dedicated white glove concierge service.