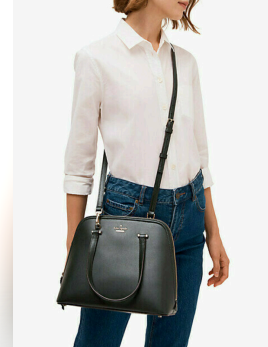




Kate Spade Payton Dome Leather Handbag

#135



Starting Bid **\$75.00**

Donated by **the Art of Life**

A classic leather handbag classic from Kate Spade. Plenty of room with a stylish twist.Â

- Saffiano leather
- Removable and adjustable long strap with drop of approximately 22" to wear crossbody, over the shoulder or carry by hand with handle drop of 5"
- Top zip closure; exterior front and back slip pockets; Kate Spade pin mount logo
- Interior features two way spade jacquard lining with one zip pocket and one slip pocket
- Approximate dimensions: 9.45"h x 11.8"w x 5.3"d