

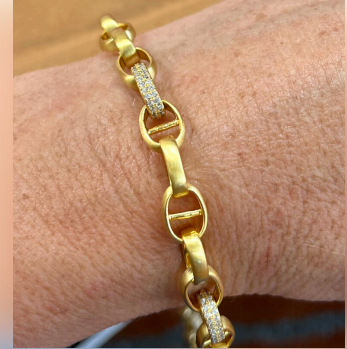


Night of 1000 Burton's
Chain Of Hope



Brush Gold Link Bracelet

#55



Starting Bid **\$195.00**

Retail Value \$600.00

3 Available

Celebrate timeless elegance with our Brush Gold Link Bracelet in yellow gold. This beautifully crafted piece symbolizes sophistication and style, making it a must-have addition to any jewelry collection. The piece is thoughtfully designed to reflect a blend of classic and modern aesthetics while adding a touch of refined elegance to your ensemble.

Design: The bracelet features a series of interlocking links with a brushed finish that exudes a subtle yet captivating shine. The design seamlessly combines contemporary style with traditional craftsmanship, creating a versatile piece that can elevate any outfit. The bracelet measures 6.5 inches. A signature camellia flower detail with the JWP logo complements this lovely piece.

Material: The bracelet is crafted from solid 925 sterling silver!