



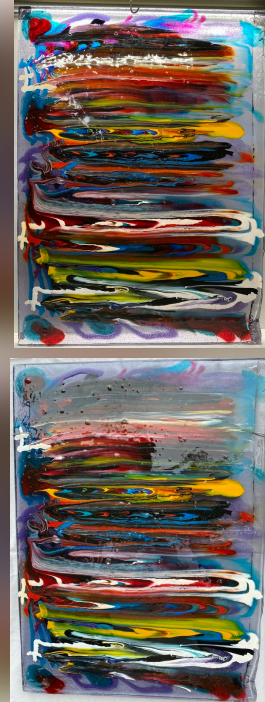
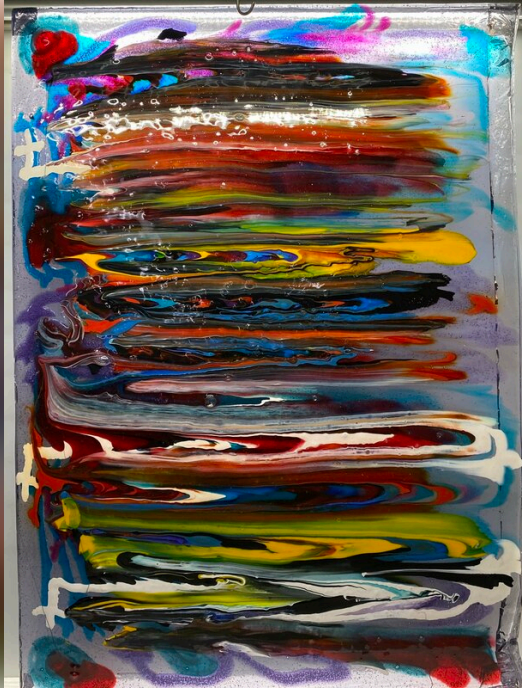
## Split Business & Givsum Catalog Items

### Split Business



## Candy Pull

#5



Starting Bid **\$700.00**

Donated by **Matt Garrett**

*Created the 19th of June, 2023.*

At 500°F the polycarbonate resembles hard candy or taffy in that it takes 20 pounds of push and pull to mix the plastic into a narrow and narrower colorband.

**Art panel dimension: 16 3/8" x 22" x 1/2" thick.**

### **Artist Statement**

"My art compositions are made of recycled plastics and found objects to present a panel that is in between abstract and figurative, so that what the viewer sees comes from their own imagination (i.e., pareidolia). During the process, I can arrange and melt the plastic with some control and intuition, but with

so many variables my result out of the oven is always a surprise. My design gets redesigned. The resin melts itself to sleep and in a dream resolves itself to the image that the future viewer needs to see. My art crosses over a